



Leader in
Social Justice

ANNUAL REPORT **2016**

OUR MISSION

Justice Resource Institute works in partnership with individuals, families, communities and government to pursue the social justice inherent in opening doors to opportunity and independence.

“As incoming Chair of the Board of Trustees, I am honored to serve such a vibrant, exciting, and positive organization. In 2016, JRI went from strength to even stronger, once again accomplishing a smooth merger with mission-compatible organizations, and providing critical service to individuals and families in a wide array of programs. We continue to be extremely proud of our talented, committed staff, led though vision and example by Andy Pond and his team. The structure is sound, our resources are strong, and our people provide ongoing inspiration. Our diversity is our strength!”

—Andrea Nix, JRI Board Chairperson

LETTER FROM THE PRESIDENT



Dear Friends of JRI,

I don't have to tell you: This past year has been a challenge. We are fortunate here in New England, where regardless of political party we have strong partnerships with state and local government. In Massachusetts, my Republican governor supports choice, marriage equality, and has appointed judges that fit within the long history of Massachusetts progressivism. At the national level, however, we have grave concern about the potential impact of regressive and discriminatory policies, as well as the impact of the potential loss of the protections enshrined in the Affordable Care Act.

If you're like me, you may be wondering: "What can I do about all this?"

For veterans of social justice, and also for those who are newly "woke," there are lots of ways to get engaged — and some of them are right here at JRI.

You can **HELP US WITH OUR MISSION**: to create opportunities that are essential to a just society. Go to our website to find the part of JRI that interests you — and make a donation to assist that program. Or come work at JRI. Or read our research on trauma-informed treatment. At JRI (among many other things) we:

- Help children and teens who have been subjected to significant trauma to develop the skills they need to survive and thrive in a challenging and competitive world.
- Help individuals with developmental disabilities to experience the joy of inclusion and community living which is their birthright, but far too many individuals have been denied.
- Help LGBTQ youth find a safe haven in a sometimes scary and threatening world.
- Engage, connect with, and empower teens who have been victims of sex trafficking; we work with them to create new life and opportunities for them.
- Create economic opportunity for young people of color — who may be the victims of discriminatory enforcement, prosecution, and sentencing — living in Roxbury, Mattapan, and Dorchester by providing them with training and supports that enable them to compete for jobs, and to be promoted once they are hired.

In this annual report you will read about our growth and how we have expanded our reach by welcoming new organizations into the JRI family. You will also read about the contributions of our talented staff, who have won honors, awards, and praise for the work they do. Every day, we are tackling trauma and helping people heal.

One final, personal note. Throughout the fall of 2016, and into the new year, I sent regular messages of support and solidarity to our staff. Most of our programs serve people who — in one way or another — are feeling targeted and marginalized, and the same was true for the JRI team. What amazed and energized me was the response I received — scores of emails, some just expressing thanks, and others with concrete suggestions about what we should do next. These communications helped build a stronger sense of mission-based solidarity. It helped us all to focus on the undeniable fact that what we do makes a difference.

MLK never thought that change would come overnight. He knew that there would be times when progress was halted, or reversed. But he believed that "the arc of the moral universe is long, but it bends toward justice". We at the Justice Resource Institute embrace that struggle, and take satisfaction in the many successes of the people we serve.

A handwritten signature in blue ink that reads "Andy Pond".

Andy Pond, JRI President

CULTURAL AND LINGUISTIC IMMERSION COURSE IN GUATEMALA

JRI faculty members Michelle Perrin, Shabori Burton, and Marta Casas travelled to Guatemala City, Sololá, and Antigua in Guatemala to immerse themselves in an experiential course. Through the use of **MULTICULTURAL AND TRAUMA-SENSITIVE EXPRESSIVE ARTS**, participants **ENGAGED WITH COMMUNITIES AFFECTED BY WAR AND OTHER TYPES OF TRAUMA**.

Course instructors facilitated experiences of collaboration and dialogue to work through diversity and differences between participating groups (William James College, Universidad del Valle Guatemala, JRI, and local professionals and communities), working together to increase the resilience of trauma-affected populations. JRI staff **RETURNED WITH A GREATER AWARENESS OF AND ABILITY FOR CREATIVE COLLABORATION**.



“While in Guatemala I gained a lot more than I expected. I knew I would learn about myself but did not expect that I would want to change the way I live. After returning home, I questioned my excessive lifestyle and was more concerned about my quality of life, from food consumption to the importance of nature. I now understand that people are the same wherever you go, and we will always be connected by nature because it surrounds us.”

A Guatemalan student taught me that her culture “takes care of the earth in order for life to give more life.””

Shabori Burton, SMART Team, Program Director of Transitional Homes/Community Clinician



GRANITE ACADEMY JOINS JRI

Granite Academy, a Braintree-based day school for middle and high school students who have emotional issues that complicate their learning, merged with JRI this past fiscal year. The merger gives JRI the opportunity to expand its existing day school programs while offering Granite Academy the support needed to continue providing its students with the best educational outcomes.

“Granite Academy has an outstanding reputation for serving students with particular learning needs, and we believe it complements the other schools we operate in the region,” said Andy Pond, President and CEO of JRI. “We can learn from some of the things that Granite Academy does really well while integrating the successful trauma-informed model of care used by our existing schools.””

JRI currently operates schools similar to Granite Academy, including the Victor School in Acton and Anchor Academy in Middleboro and on Cape Cod. The schools will now collectively serve 140 students from communities across eastern Massachusetts.

Granite Academy’s current enrollment is 45 students in grades 5-12, who are referred from over 30 local school districts. Granite Academy students experience a range of challenges that complicate the learning process, social interactions, and family life. These challenges include diagnosed learning disabilities, mood disorders, anxiety and other psychiatric diagnoses, attention deficit disorder, attendance problems, difficulty participating in school activities, executive functioning deficits, self-regulation problems, low self-confidence, social skills weaknesses, and age-appropriate independent living skills.

“Merging with JRI and its rich array of programs and schools is a fantastic opportunity for Granite Academy,” says Jim Bertram, Executive Director of Granite Academy, now a division of JRI. “JRI’s range of resources will strengthen Granite Academy and contribute to our ability to provide the best possible services for our students, their families, and their communities.””

Granite Academy offers a fully graded and approved academic curriculum, MCAS preparation, vocation and college preparation, and individual counseling. Students who successfully complete the school’s academic program receive a diploma issued by the student’s home school system.



JRI INVESTS IN TRAINING FOR STAFF DEVELOPMENT

JRI's executive team prioritized a focus on staff development this past year. Targeted with the responsibility of overseeing all of our internal training needs as well as offering external trainings, the Director of Training and Trauma Response position was created.

- We developed our web-based training, **LEARNING MANAGEMENT SYSTEM (LMS)**, providing all staff with access to online training to support training initiatives without the impact of travel cost and time. All programs have been initiated in its use, and most have started implementing the LMS.
- We are excited to have two new state-of-the-art training centers in our Needham and Fall River offices, which are central to our service areas. The space is high-tech and is an amazing atmosphere for staff to work in.
- We also started several new leadership-development groups to support new or soon-to-be leaders across JRI. We work with them to develop their organizational and management skills.
- Last, we started quarterly networking lunches, where our leaders meet to network, brainstorm, and share ideas. It also is an opportunity to support leadership development across JRI.

BUILDING COMMUNITIES OF CARE — TRAUMA-INFORMED INTERVENTION PRACTICES

JRI Presenters: Robert Gervais, Division Director; Stacey Forrest, M.Ed., Program Director

Building Communities of Care (BCC) is a **TRAUMA-INFORMED, SYSTEMS-BASED TRAINING APPROACH TO WORKING WITH INDIVIDUALS OF ALL AGES IN A VARIETY OF SETTINGS**. Delivered as both



an individual-participant training and a “train-the-trainer”-based model, the BCC curriculum was **DEVELOPED BY EXPERTS IN THE FIELDS OF MENTAL HEALTH, EDUCATION, TRAUMA TREATMENT, AND RESIDENTIAL AND COMMUNITY-BASED CARE**. BCC is uniquely designed to provide a clear, systems-based approach to therapeutic work and crisis intervention, while still allowing for a great deal of individualization. Critical topics in trauma-

informed care are covered, including creating nurturing and supportive environments, highlighting the vital role of staff and caregivers, building relationships, understanding the impact of trauma on development, improving de-escalation and crisis intervention skills, and much more. BCC has been approved by The Trauma Center at JRI, a program at the forefront in the field of trauma.

Because this training is focused on individualizing treatment and applies to all types of staff/caregivers, it can be used seamlessly in a variety of programs and agencies. Instead of focusing solely on problem behaviors and crisis interventions, BCC takes a **HOLISTIC VIEW OF EACH INDIVIDUAL — OFFERING A FULL CONTINUUM OF SUPPORTIVE STRATEGIES AND CONCEPTS**.



“The mission of the Social Innovation Forum is to create positive social change in greater Boston by engaging leaders, strengthening organizations, and building networks.”

SMART TEAM RECEIVES THE 2016 SOCIAL INNOVATOR FORUM RECOGNITION

SMART Team, a division of JRI, **SEEKS TO DISRUPT THE PATTERN OF SOCIAL ISOLATION AND ENCOURAGE HEALTHY BEHAVIORS AMONG PROVEN-RISK YOUTH**. SMART Team programs range from alternatives to detention programs for youth held on low-level offenses, to a 24/7 trauma response team for adolescents impacted by homicide, to YouthHarbors as a solution to unaccompanied student homelessness.

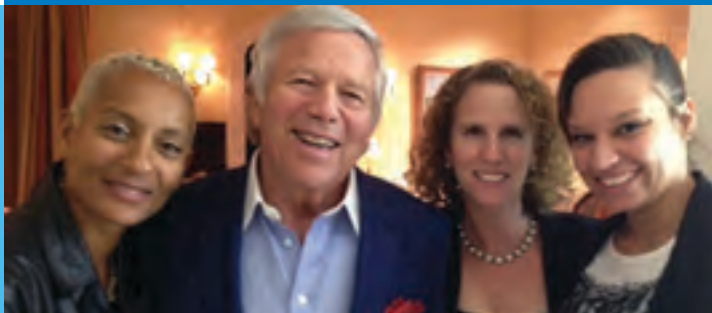
SMART Team had the **DISTINGUISHED HONOR OF BEING CHOSEN TO PARTICIPATE IN THE 2016 SOCIAL INNOVATOR FORUM** among a group of organizations working for social change across Greater Boston. The Social Innovators program helps organizations, such as SMART Team, **GAIN VISIBILITY, EXPAND NETWORKS, AND STRENGTHEN IMPACT**.



BERKSHIRE MEADOWS

Last year, we opened our newest group home as part of our Berkshire Meadows program. This group home is a state-of-the-art facility, where our **CLIENTS ARE ABLE TO LIVE IN THE LOCAL COMMUNITY WHILE STILL RECEIVING THE SUPPORTS NECESSARY FOR THEIR DAILY SUCCESS**. Our clients are loving the new facility, their new space, and their new connections to the community.

ROBERT KRAFT MAKES \$100,000 COMMITMENT TO MY LIFE MY CHOICE TO END COMMERCIAL SEXUAL EXPLOITATION OF CHILDREN



JRI's **MY LIFE MY CHOICE** has received a \$100,000 commitment from Robert Kraft and the New England Patriots Charitable Foundation to **PREVENT THE COMMERCIAL SEXUAL EXPLOITATION OF CHILDREN** through survivor-led programs that educate and empower youth to find their voice and create a positive life. The surprising news of the two-year challenge grant came directly from Robert Kraft, owner of the New England Patriots.

“As I’ve learned more about My Life My Choice, I’ve been impressed with their ability to reach and engage with a population that society often turns a blind eye to when it comes to funding and programming,” said Kraft. “Bottom line . . . My Life My Choice is saving lives through its strategic model and unrelenting efforts.”

The Foundation has donated \$50,000 to allow My Life My Choice to expand its Survivor Mentoring program and has pledged another \$50,000 that will match, dollar-for-dollar, every gift to My Life My Choice.

“This gift means so much,” said Lisa Goldblatt Grace, Co-Founder and Director of My Life My Choice. “Each dollar represents time spent supporting a girl who has been demeaned and abused in the commercial sex industry, helping her to find safety, find a path to a real future, and find her voice.”

With the help of the Foundation’s generous gift, My Life My Choice is able to add a Survivor Mentor, which helps 20 new exploited girls find stability, safety, and hope as they move forward in life.



INTENSIVE FOSTER CARE PROGRAM

JRI’s Intensive Foster Care Program was selected as one of six programs to participate in the Massachusetts Child Trauma Project (MCTP). MCTP’s goal is to transform the child welfare system by integrating trauma-informed and trauma-focused practice into child protective service delivery, and improve safety, permanency, and well-being outcomes for children involved with child welfare. MCTP has trained our staff who, in turn, have trained our foster parents.



TRAUMA DRAMA VIDEO PREMIERE

Last April, in collaboration with Hemenway & Barnes LLP, JRI hosted a breakfast meeting with presenter Dr. Joseph Spinazzola of the nationally known Trauma Center at JRI. Dr. Spinazzola explored the subject **TRAUMA DRAMA: THERAPY, ACTING AND EDUCATION THAT MOVES YOUTH FROM VIOLENCE TO A NEW VISION** and premiered the Trauma Drama video demonstrating the healing of trauma through evidence-based improv.

The Trauma Center at JRI holds an **UNPARALLELED REPUTATION FOR LEADING THE FIELD OF TRAUMATIC STRESS THROUGH TRAUMA-INFORMED CARE**. Trauma Drama is an evidence-informed, innovative approach to tertiary prevention and clinical intervention for **VULNERABLE YOUTH WITH HISTORIES OF EXPOSURE TO FAMILIAL AND COMMUNITY VIOLENCE; SCHOOL BULLYING, INTOLERANCE, AND HATE CRIMES; MALTREATMENT OR NEGLECT; AND DISRUPTED CAREGIVING AND OTHER CHRONIC LIFE ADVERSITY**. Trauma Drama uniquely synthesizes elements of improvisational theater and cooperative play into a therapeutic framework grounded in the six core components of complex trauma intervention: promotion of safety; self-regulation; healthy attachments; identity development; self-worth, esteem and competency; and integration of trauma and adversity experiences into a meaningful and forward-looking life narrative.

Guided by the principle of transformative action, Trauma Drama immerses youth in vivid and poignant “as-if” activities and theatrical skits with peers and adult troupe members who seek to provide an optimal balance of challenge and opportunity to promote self-expression, cognitive flexibility, creative problem-solving, “in vivo” conflict resolution skills, and above all, an embodied sense of personal agency and mastery.

Visit www.traumacenter.org/initiatives/Trauma_Drama.php for more information on the Trauma Drama Interventions.



EITHER YOU DON'T KNOW OR YOU'RE IN DENIAL . . .

JRI, through its nationally recognized program MY LIFE MY CHOICE, Diamond Educators Mentoring Inc. (DEMI), teamed up with The Prevention, Intervention, Mediation Project (PIM), Youth in Crisis, and the Massachusetts Department of Public Safety in May 2016 to launch a series of community forums entitled **“EITHER YOU DON'T KNOW OR YOU'RE IN DENIAL.”** The forums were conceived from the need to increase gang and sexual exploitation awareness and to assist teachers, coaches, social workers, community outreach workers, parents, and other caring adults in accessing help. The forums' ultimate goal is to influence how school systems, community-based organizations, and sports leagues look at training personnel and volunteers to recognize and address these issues.

Presenters: Leroy Peeples, Jr. (PIM), an expert on gang culture
Audrey Morrissey, Associate Director of MY LIFE MY CHOICE
and a survivor of Human Trafficking

Dana Barros, former pro basketball player, who grew up in
Boston's inner city

Shawn Brown, JRI SMART Team's DEMI

Hodari Cail, Massachusetts Director of Community Affairs



FUTURES FOR KIDS

In 2016, JRI introduced **FUTURES FOR KIDS TO ADDRESS THE INCREASING CRISIS OF DRUG ABUSE IN THE COMMUNITY.** With Andy Pond's support, the kids and staff of our residential programs participated in peer-leadership training to run substance abuse prevention groups. Modeled after JRI's highly regarded Futures staff-focused leadership-development program, we invited programs at all levels of intensity to gather at JRI's Needham office for the training. We thought they would appreciate the opportunity to come together at a centralized, well-resourced training location, interact with kids and staff from other programs, get to know that they are not alone in their challenges, and value the camaraderie and vital mission of reducing substance abuse in their programs and communities. Kids and their staff coaches from secure settings, residential schools, and group homes participated and pronounced the experience a rousing success.

Working with Health Resources in Action, an established DPH training provider, we adapted their peer-leadership training model for our populations. Our kids would need more support than a typical high school audience to recognize themselves as leaders, given the complex challenges that bring them to residential treatment settings. Orientation training for staff coaches was provided prior to the three-day kids-and-staff training. So far 14 teams of staff and kids have benefitted from the training. To address turnover of program populations, we anticipate offering the series semi-annually. Our kids **RETURNED TO THEIR PROGRAMS PREPARED TO RUN GROUPS FOR THEIR PEERS**, and one already transitioned home and connected with a community provider to volunteer to run groups for at-risk kids at their site.

MALDEN RESIDENT HONORED WITH JRI'S VOLUNTEER OF THE YEAR AWARD



Arthur Shirk of Malden, and his service dog, Mario, were honored with the Volunteer of the Year Award for their work at JRI's Willow Tree Natick Day Habilitation Program. Serving adults whose significant learning disabilities are often accompanied by chronic health conditions or physical disabilities, the Willow Tree program incorporates community-based activities throughout the day with individualized active treatment plans.

“Being able to see employees, interns, volunteers, and the individuals JRI serves grow and change is the most rewarding part of my job,” said Andy Pond, President of JRI. “Arthur has demonstrated his commitment to JRI, our mission, and the continued success of our clients, and we are truly grateful.”

Arthur and Mario have been volunteering at Willow Tree Natick for two years, bringing hope, encouragement, and joy to the individuals we serve. In one instance, Arthur and Mario became the faces of inspiration for an individual who uses a wheelchair and who was trying to walk with adaptive equipment. Walking Mario motivated her to practice every day to make sure she was ready for Mario's next visit.



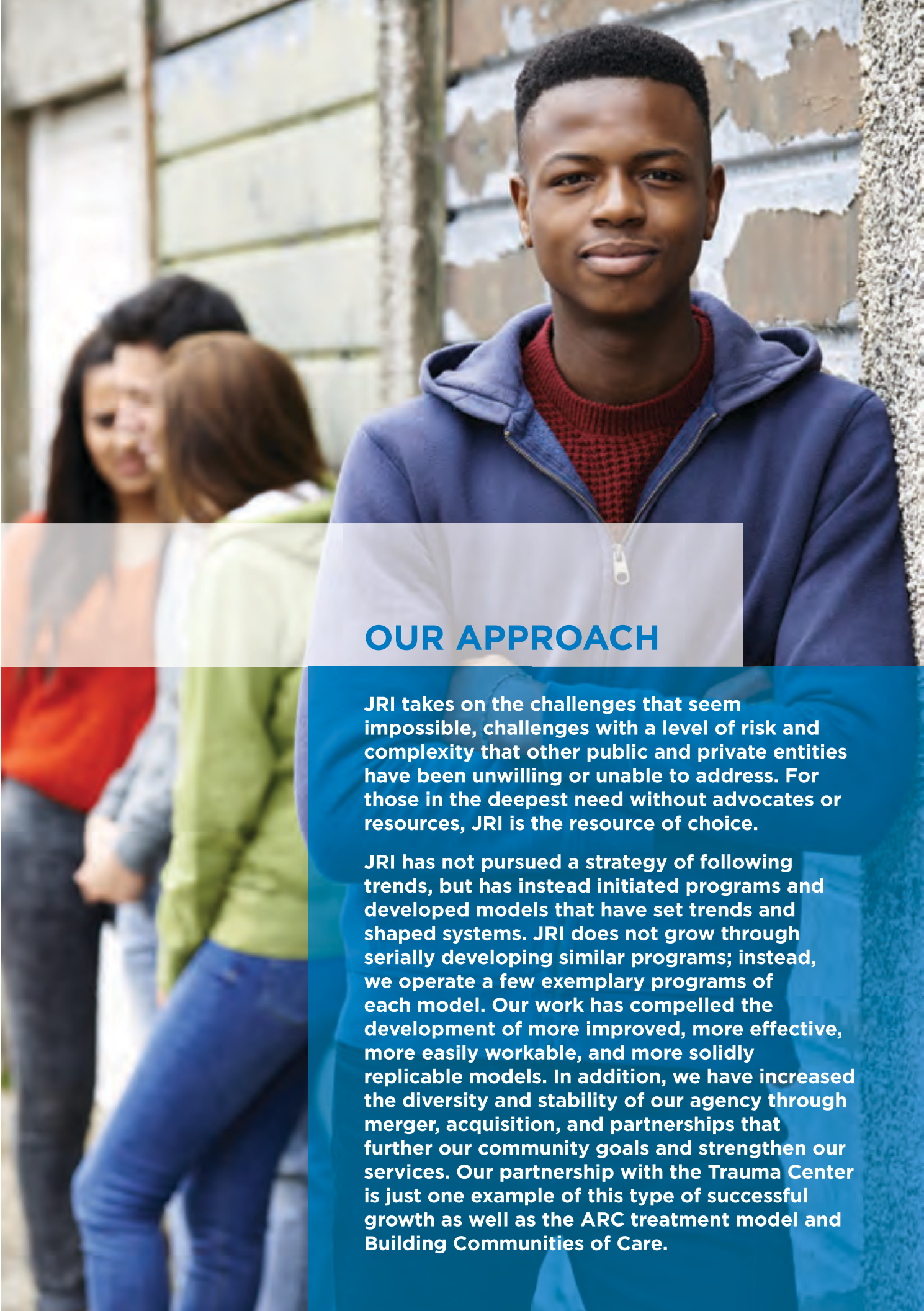
THE SPIRIT OF VOLUNTEERISM

JRI had 275 volunteers and interns who completed 20,184 hours of service, which equals a \$425,000 contribution this past fiscal year.



TOP PLACES TO WORK 2015 & 2016

JRI is proud to be named one of *The Boston Globe's* Top Places to Work for the second year in a row! Once again, our employees filled out an anonymous questionnaire given to employees at 2,021 companies throughout the Commonwealth, ranking us so highly on issues that create a positive atmosphere and working conditions in our company that we rose from #21 last year to #13 this year!



OUR APPROACH

JRI takes on the challenges that seem impossible, challenges with a level of risk and complexity that other public and private entities have been unwilling or unable to address. For those in the deepest need without advocates or resources, JRI is the resource of choice.

JRI has not pursued a strategy of following trends, but has instead initiated programs and developed models that have set trends and shaped systems. JRI does not grow through serially developing similar programs; instead, we operate a few exemplary programs of each model. Our work has compelled the development of more improved, more effective, more easily workable, and more solidly replicable models. In addition, we have increased the diversity and stability of our agency through merger, acquisition, and partnerships that further our community goals and strengthen our services. Our partnership with the Trauma Center is just one example of this type of successful growth as well as the ARC treatment model and Building Communities of Care.

ADDITIONAL 2016 HIGHLIGHTS

Over the past year, JRI has grown by developing new programs, expanding existing ones, and improving our effectiveness in serving our clients. Following are more highlights of JRI's impact in 2016 helping to create a stronger 2017.



The Little Heroes Home opened in July 2016 with a full census of 12, and it is the first intensive latency-aged group home for JRI. The home is located in the suburban community of Dracut, MA, and serves children ages 5-11 who come to us with social, emotional, mental health, and behavioral challenges, and histories of complex trauma. The program's services are **FOUNDED ON THE BELIEF THAT CHILDREN HAVE A RIGHT TO A STRUCTURED HOMELIKE SETTING, which ALLOWS THEM TO GROW AND ENGAGE IN NORMAL CHILDHOOD EXPERIENCES.**

The Little Heroes name represents the hope that each child is able to find their inner resiliency like a super power. The super hero in them is represented throughout the milieu.



FUTURE LEADERS OF CAPE COD

Future Leaders of Cape Cod (FLOCC) is an internship program through JRI's Community Service Agency. FLOCC is open to young adults ages 16-21 who are involved in at least one Children's Behavioral Health Initiative service, have an identified internship coach, and need assistance learning and practicing vocational skills. With the support of their internship coach, the young adults are matched with a local business based on their strengths, interests, and vocational goals. The FLOCC program **DEMONSTRATES JRI'S COMMITMENT TO THE YOUNG ADULTS IN OUR PROGRAMS AS WELL AS THE COLLABORATION WITH THE BUSINESS COMMUNITY.**



JUVENILE DRUG TREATMENT COURTS

JRI provides services in Bristol County for Juvenile Drug Treatment Courts (JDTC). JRI piloted a specialty drug treatment court at the Taunton Juvenile Court for the state, and we then expanded the program even more this past fiscal year '16. **JRI IS THE ONLY JCC VENDOR STATEWIDE THAT PROVIDES THIS SERVICE IN JUVENILE COURTS.** We now provide JDTC services in the New Bedford, Fall River, and Taunton Juvenile Courts. It is a critical initiative given the opiate crisis, and we are very proud of the work that has been done by the JRI staff to make this pilot program a huge success.



CONNECTICUT COMMUNITY-BASED SERVICES

JRI Connecticut continues to expand its footprint across the state by offering high-quality treatment. JRI Connecticut Community-Based Services now provides services to Regions 3, 5, and 6. In Thompson, construction for the **NEW STATE-OF-THE-ART DAY SCHOOL, RIVER RUN ACADEMY**, has begun. The day school, which will be on the site of the Susan Wayne Center of Excellence, is set to open in fall of 2017. The Connecticut Group Homes continue to **SHOWCASE THE MOST CLINICALLY SOUND TREATMENT PLANNING IN THE STATE** for young adults. The Connecticut Division outcome measures for success in our students and young adults continued to impress in 2016.



GRIP COMMUNITY-BASED SERVICES

JRI GRIP Community-Based Services offers in-home services to children and families in the greater Holyoke area. We opened in June 2016 and are excited to be expanding services in western Mass. Through services like **IN-HOME THERAPY AND THERAPEUTIC MENTORING**, children struggling with behavioral and emotional challenges and their families can develop the necessary skills and strategies to support the child at home and in the community.

In-Home Therapy is a collaborative, family-based intervention aimed at improving family relationships through intensive work with a therapeutic team. Therapeutic Mentoring supplements a child's other treatment by providing opportunities for the child to develop and practice their skills in the community with the one-on-one support of their mentor. The program has been building capacity and is currently serving 16 families.



JOURNEY HOME

JRI relocated Journey Home, one of our group homes, to a beautiful new space that allows for many different types of everyday living. The location offers a more therapeutic setting, with support and treatment, for adolescent males who are ready to live and participate in a community setting. Journey Home empowers young men as they begin their journey of hope, discovery, and learning to navigate through the obstacles of life by providing a safe and engaging environment. Journey Home believes that with family-driven, client-guided treatment anchored in trauma-informed care, young men can thrive, find their self-worth, and find their way "home."

YOUTH HARBORS

In our six years of existence, JRI's **YOUTH HARBORS PROGRAM HAS SEEN 96% OF ITS YOUTH GRADUATE FROM OR REMAIN IN HIGH SCHOOL**, when statistically, homeless youth are 87% more likely to drop out than their housed peers.*

Julian moved to the United States as a permanent resident to live with his father and improve his life. However, his father had a drinking problem and periodically became violent. One night, his father hit him and Julian had had enough. He told his guidance counselor and was quickly connected to a Youth Harbors Case Manager. Youth Harbors helped him find a friend to stay with while working toward finding a safe room to rent. Julian has now made up his absences, receives partial rental assistance from Youth Harbors, and will graduate in June.

*(2014 report: America's Promise Alliance and its Center for Promise at Tufts University.)





Hope for All Seasons was established five years ago with the goal of providing children in need with a gift during the holidays. However, over the years, JRI has recognized a greater need among the families it serves, many of whom live below the poverty line. Giving back year-round to families experiencing difficult times provides them with critical resources, along with hope. **“THE HOPE FOR ALL SEASONS FUNDRAISER IS A WAY FOR THE COMMUNITY TO SUPPORT FRIENDS AND NEIGHBORS WHO ARE LESS FORTUNATE,”** said Andy Pond, President and CEO of JRI. **“IT REALLY DEFINES WHAT COMMUNITY IS ABOUT.”** This year’s sold out event raised more funds than prior years, which will assist a greater number of families.

LANEWOOD RESIDENCE LGBTQ HOUSE

The Lanewood Residence of the van der Kolk Center at Glenhaven Academy is a residential treatment program that provides comprehensive clinical, educational, vocational, and medical services for Lesbian, Gay, Bisexual, and Transgender (LGBTQ) and allied youth between 12 to 22 years. Opened in October, 2016, it is the first residential treatment program in the U.S. that specializes in trauma-informed treatment of LGBTQ youth.

Lanewood provides LGBTQ students opportunities to share their experiences in an inclusive, confidential, nurturing, safe and supportive environment. Lanewood’s accepting community is designed to foster positivity and growth and emphasizes the development of each student’s sense of self and identity. Family focused services prioritize providing support and education to caregivers who may be struggling with either understanding or accepting their child’s sexual orientation or gender identity expression.



FUTURES ALUMNI CELEBRATION

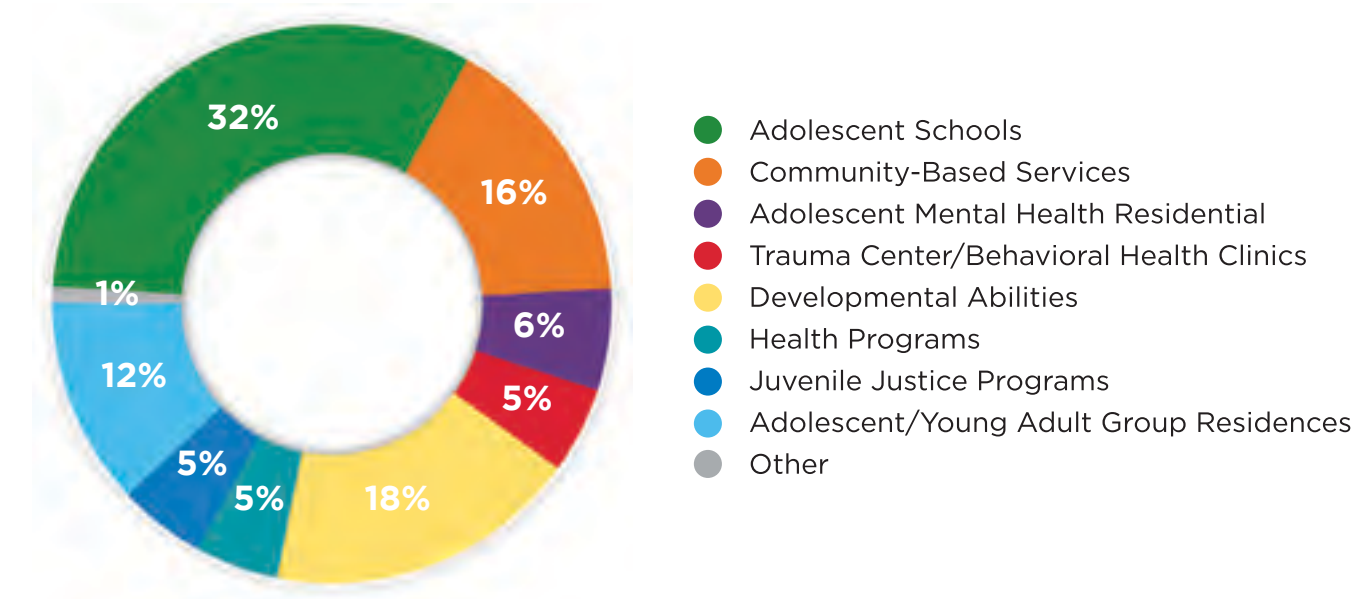
Last February, we hosted our first-ever Futures Alumni Celebration, bringing back the over 100 staff who participated in our Futures Program and their supervisors. The JRI Futures Program is our Staff Development program, where we support the **DEVELOPMENT OF STAFF RECOGNIZED AS POTENTIAL FUTURE LEADERS FOR JRI** who want to make JRI their career. We hosted a luncheon to celebrate the work of our Futures Alumni, showcase the great work the staff who have attended Futures have continued to do in their time after Futures, and provide continued opportunity to network and support their career development.



FINANCIALS & DEMOGRAPHICS

FY 2016 Revenue by Service Category

Total Revenue: \$149.1M



CLIENT IMPACT BY DIVISION IN FY 2016

Acute Care and Juvenile Justice	1,125
Behavioral Health & Trauma	2,406
Community Services	3,988
Connecticut	179
Developing Abilities	536
Educational and Residential	624
Foster Care and Childhood Services	1,390
Health and Housing	9,370
Total Unduplicated Clients Served	19,618

FY 2016
BOARD OF DIRECTORS

JRI PRESIDENT

Andy Pond

BOARD CHAIRPERSON

Andrea Nix

BOARD VICE-CHAIR

Robert J. Guttentag

TREASURER

Audrey Shelto

CLERK

Stephen Porter

BOARD MEMBERS

Mark Cuddy

Susan Miller

Joel Kershner, *Honorary Board Member*

Arden O'Connor

Dawna Paton

Valerie Samuels

Audrey Shelto

James Spencer

“We are truly grateful to Susan Wayne Center for turning Maddie’s life around. As you know we had her in several residential programs and it was a combination of treatments at SWC that worked for her.”

—Parent from Susan Wayne Center

JRI PROGRAMS AND SERVICES

BEHAVIORAL HEALTH & TRAUMA SERVICES PROGRAMS

Boston Trauma Response Team
Connecticut Behavioral Health Center
Integrated Clinical Services
Metrowest Behavioral Health Center
My Life My Choice
Southeast Behavioral Health Center
Southern New England Behavioral Health & Trauma
Total Achievement Program
Trauma Center at JRI

COMMUNITY-BASED SERVICES PROGRAMS

Cape and Islands Community Service Agency
Cape and Islands Behavioral Health Service
Clinical Services Team
Connecticut Community-Based Services
Diamond Educators Mentoring
Dimock Community Service Agency
First Connections

Metro-Boston Community-Based Services
Metrowest Community-Based Services
Northeast Community-Based Services
SMART Team
Southeast Community-Based Services
Southeast Continuum
Southeast In-Home Behavioral Programs
STRIVE
Transitional Homes
YouthHarbors

DEVELOPING ABILITIES PROGRAMS

Day Habitation Services & Supports
Employment Services & Supports
Full Circle ARTS
Residential Services & Supports

EDUCATIONAL PROGRAMS

Anchor Academy
Berkshire Meadows
Bridge Group Home
Case House
Early Childhood Services

Educational Advocacy Program
Granite Academy
Lanewood Group Home
Meadowridge Academy
Pelham Academy
Susan Wayne Center of Excellence
Susan Wayne Center of Excellence Clinical Day School
Swansea Wood School
van der Kolk Center
The Victor School
Walden Street School

HEALTH PREVENTION & HOUSING PROGRAMS

Assisted Living
Boston GLASS
Focus
Health Law Institute
Housing Options
Huntington at Symphony
Medical Case Management
PACT Project
Peer Support Services
Program RISE
River Street

TRANSITIONAL PROGRAMS

Connecticut Group Homes
Evolution
GRIP
Journey Home
Lindencroft
Little Heroes
Littleton Group Home
Rediscovery
STEP
Stepping Out
Teen Parenting Program

YOUTH & FOSTER CARE PROGRAMS

Adoption Program
Attleboro Center
Butler Center
Centerpoint
Cohannet Academy
Court Clinics
Connecticut Therapeutic Center
Massachusetts Intensive Foster Care
Merrimack Center
Partial Hospitalization
Youth Services
Capacity Building



Leader in
Social Justice

Justice Resource Institute, Inc.

160 Gould Street

Suite 300

Needham, MA 02494-2300

781.559.4900

www.jri.org