

Anchors Away: Students take off on Air Force One

Anchor Academy students had the exciting opportunity to tour a replica of Air Force One. The President's airplane, a remodeled Boeing 747, was on display at the Quonset Point Naval Air Station in North Kingstown, RI. When the students and school employees arrived, they learned in great detail about the most secure airplane in the world. The tour included a hallway with photos of US presidents, a conference room, a private office for the president, and living quarters for the first family. Students also toured a display of cars and other items once used and owned by former United States presidents. This is another example of transformational learning at Anchor Academy!

Special points of interest:

- Air Force One
- Giving Back
- Vocational Spotlight
- Therapeutic Dog Training
- Welcome New Employees
- Nurse's corner

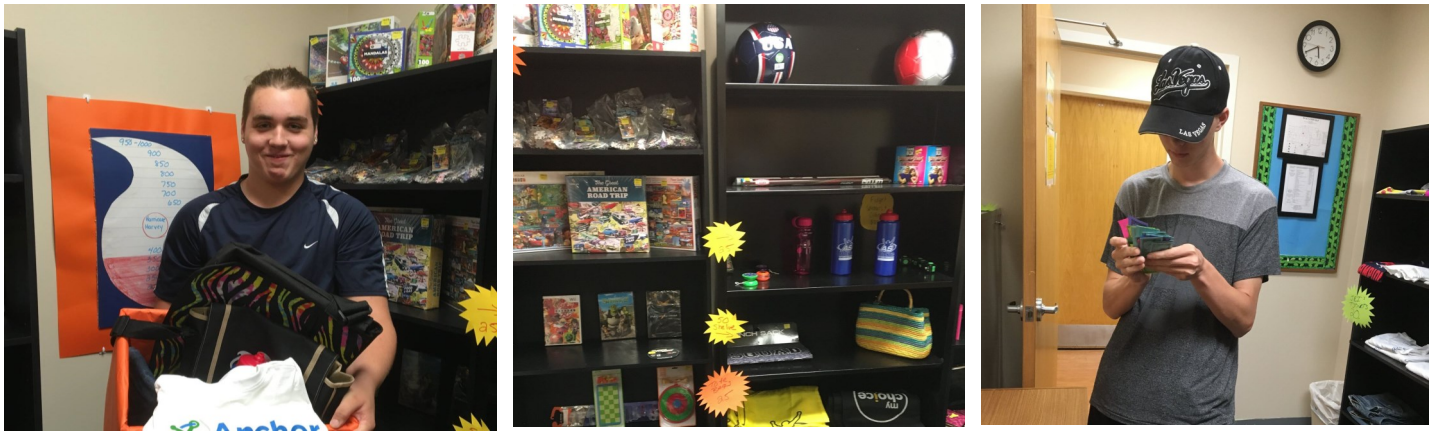
Inside this issue:

<i>Giving Back</i>	2
<i>Vocational Spotlight</i>	2
<i>Therapeutic Dog Training</i>	3
<i>Welcome New Employees</i>	3
<i>Nurse's Corner</i>	4



Anchor Academy Students Giving Back

Anchor Academy students are giving back! The students donated their earned school store dollars-'Anchor Doubloons' for supplies to support victims of Hurricane Harvey and Hurricane Irma. The students collaborated with a local drive to identify mandatory and wish list items for those in need. The students had the choice of purchasing items from the school store on campus, The Port of Anchor, or purchasing necessary items from local stores. In addition to promoting challenging academics and vocational opportunities, Anchor Academy emphasizes the importance of empathy, giving back, and care. The self-less acts of our students do not go unnoticed!



VOCATIONAL SPOTLIGHT:

New Bedford Harbor Development

Anchor Academy has fostered a working relationship with the New Bedford Harbor Development Commission. The Harbor Development Commission is responsible for the maintenance and expansion of the New Bedford Harbor state piers. The partnership consists of students from Anchor Academy working side by side with the Harbor Development Commission. The students work collaboratively with the commission to help maintain the docks at one of the countries busiest fishing ports and have helped with the construction of new docks for the port. Anchor Academy has had students interning with the Harbor Commission for the past year, where they have become a positive asset for the Harbor Development Commission. Anchor Academy students are developing positive work skills as well as positive professional relationships with the Harbor Development Commission.



Therapeutic Dog Training

Anchor Academy students have continued supporting Anchor Academy's School Dog, Wally, with his trainings with Eric Letendre, "The Amazing Dog Training Man." Wally has officially completed all training sessions and the only thing left is to pass the certification exams. Soon enough, Wally will officially be a therapy dog, even though he operates as one already to our students! This process would not have gone as smoothly if it weren't for the students of Anchor Academy who have seen this process through from beginning to end.



Anchor Academy Welcomes New School Employees!

Paul Bottome - Director of Education



Mr. Bottome began his career in education 15 years ago as a teaching assistant before moving on to teach math and science to high school students at a therapeutic day school. Mr. Bottome then spent over five years as an educational specialist for the Massachusetts Department of Elementary and Secondary Education where he worked with special educators throughout the state. While there, he helped to ensure that all students had access to the supports they needed in order to accomplish their goals. Paul believes strongly in the potential of every student to excel in school and he is committed to helping them reach their full capabilities. Anchor Academy welcomes Mr. Bottome to our school!

Michelle Reese - Science Teacher



Ms. Reese entered the education field 5 years ago, where she working in both the general education and special education fields. Throughout her time as an educator, Ms. Reese has gained several years experience working in therapeutic day schools. Ms. Reese is currently working on her Master's in Education in the field of Literacy. Ms. Reese connects hands-on experiments and labs with the lessons she teachers in her classroom and is excited to work with our students at Anchor Academy. Welcome to our team, Ms. Reese!

Kerry Johnson - Senior Classroom Counselor



Anchor Academy is excited to welcome Senior Classroom Counselor, Kerry Johnson. Mrs. Johnson has years of experience working with students through a strength-based approach. She is passionate around helping students improve their life skills that help them to become successful and productive citizens in there community. Mrs. Johnson has taken on a leadership role in helping the milieu of the school routines and rituals running smoothly on a daily basis. Welcome to the Anchor Academy team, Mrs. Johnson!

Nurse's Corner

School Wide Health Initiatives

Fitness Fridays

Regular physical activity helps build strong bones and muscles, control weight, reduce symptoms of anxiety and depression and reduce the risk of developing conditions such as Heart Disease and Cancer. Anchor Academy incorporates fitness into our routines daily but currently has a special initiative around promoting fitness on Fridays. A student and school employee will be announced every 3 weeks as the Fitness Fridays winner and a prize will be awarded!



Two students engaging in a Fitness Friday activity at Oliver Mill Park in Middleboro. The students enjoyed a lengthy hike throughout the grounds!



Our first fitness challenge winners. Student and staff showing off their winnings!

Flu Initiative

Anchor Academy is dedicated to providing a healthy, nurturing environment for our students. The SINGLE best way to prevent the flu is getting the flu vaccine every year. A flu clinic for school employees was held at Anchor Academy to help support this! We hope all of our students receive the flu vaccine this year as well as our employees.



A School of JRI | 

Lindsey Bartlett, LMFT
Director
508-947-0131 x3751
lbartlett@jri.org

Lauren Kadesh, LICSW
Dean of Operations
508-947-0131 x3765
lkadesh@jri.org

Anchor Academy Mission Statement

Anchor Academy exists to provide challenging academics in a safe and supportive therapeutic rich environment. Through a strength-based approach, we offer a transformational learning experience that fosters resiliency and prepares students to become skilled, informed and responsible citizens. We design our program around anchoring our students with the supports they require to successfully achieve their academic, social and emotional goals.